

Installation Kit for frequency-control lifts WDGAS58B with shaft encoder



The following installation kits are available for fitting the encoder to a frequency controlled lift. Every installation kit consists:
1 x Encoder, 1 x Mountingangle, 1 x shielded cable 15 m length,
1 x Paguflexcoupling, 1 x Shaftadapter

Mechanical Data

Housing

- Clamping flange: Aluminium
- Cap: Aluminium, powder coated
- Diameter: 58 mm

Shaft

- Material: stainless steel
- Diameter: 10 mm, H7
- Length: 20 mm
- Permitted load
Load: max. 220 N radial
max. 120 N axial
- Starting torque: approx. 1 Ncm at ambient temperature

Bearings

- Type: 2 precision ball bearings
- Service life:
1x 10⁹ U revs. at 100 % shaft load
1x 10¹⁰ U revs. at 40 % shaft load
1x 10¹¹ revs. at 20 % shaft load

Max. operating speed: 8000 min⁻¹

Weight: approx. 250 g

Connections: SH8: radial connector, 8 pin

Operating temperature: -20 °C up to +80 °C

Storage temperature: -30 °C up to +80 °C

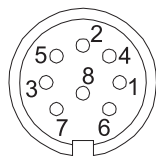
Encoder-Order No.: WDG58B-YYYY-ABN-H24-SH8
- YYYY: with 1024, 2048, 4096 PPR
- 3 channels, A, B and zero marker pulse N
- H24: 10 VDC up to 30 VDC HTL
Power supply
- SH8: radial connector, 8 pin

WDG58B-YYYY-ABN-R05-SH8
- YYYY: mit 1024, 2048, 4096 PPR
- 6 channels, A, B, zero marker pulse N and inv.
- 5 VDC TTL power supply with inv.
output circuit
- SH8: radial connector, 8 pin

YYYY: Please specify required. PPR: 1024, 2048 or 4096

Pin identification SH8

Function	Pin HTL	PIN TTL
Positive	2	2
Negative	1	1
A	3	3
A inv.	-	6
B	4	4
B inv.	-	7
N	5	5
N inv.	-	8

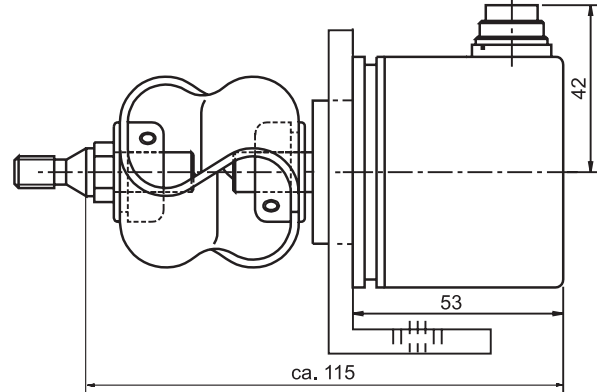


The view of the soldered side of the connector corresponds to the view of the pin arrangement on the encoder.

- Complete retrofit set
- Quickly and reliably fitted with the aid of the accessories
- Cost-effective modernisation solution
- TTL, HTL output
- Threads: M8, M10, M12, M16 und M20

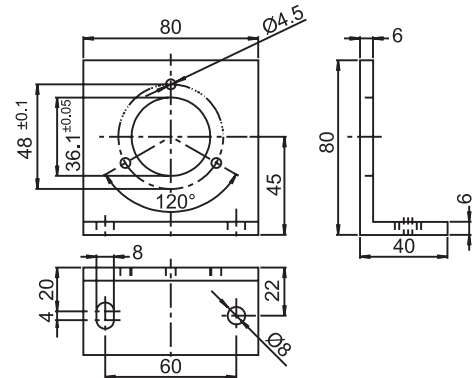
www.wachendorff-automation.com/wdgas58b

Installation Kit WDGAS58B:



Mounting bracket:

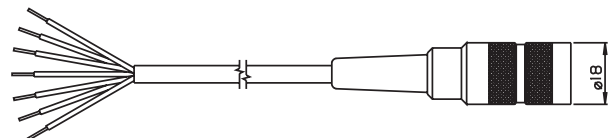
The mounting bracket makes for easy installation of the encoder in the lift system. However care should be taken that the admissible load of the coupling is adhered to.



Order No.: MW58B

Cable:

The cable is 15 m in length and is shielded, however the shield is not connected to the connector housing. With a mated connector, the encoder meets protection class IP40.



The cable has a connection as follows:

Function	Colour
Positive	brown
Negative	white
A	green
A inv.	red
B	yellow
B inv.	black
N	gray
N inv.	violet
Shield:	cable braiding

Order No. KD84015

